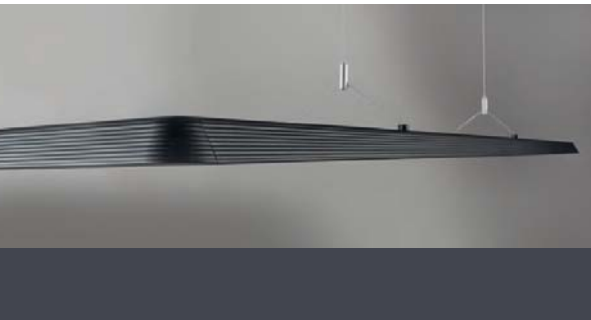
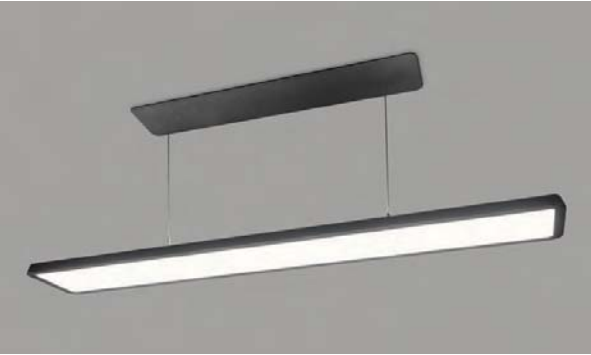


52 **INLIO****DESCRIPTION**

INLIO is a luminaire for office premises with direct-indirect light distribution, and UGR <17. It uses the latest LED, the Edge Lighting Technology and Tunable White. The luminaire has two variants according to the placement of the cup. Luminaire power supply is feed through the wire suspension assembly. The luminaire has a minimalist design. Throughout the entire circumference it is only 24 mm high, with bevelled edges so it seems to be even optically thinner. Rounded edges and wavy structure give the luminaire the characteristic features and significant differentiation. Design Matuš Opálka.



Design: Matuš Opálka

**TYPE**
 Suspended
MATERIAL

Body Aluminium profile finished in epoxy powder coating

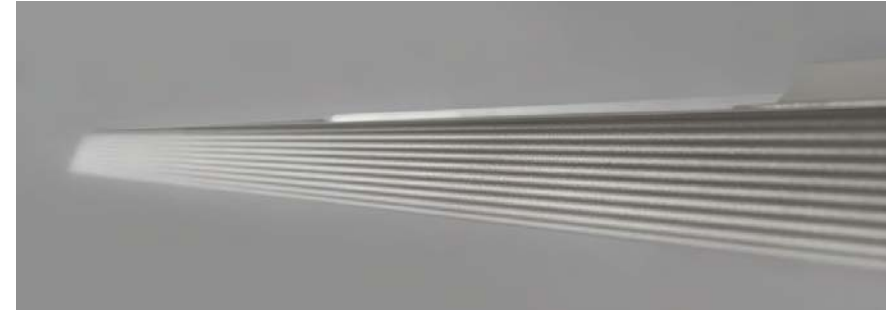
Optical system Microprismatic optical system
Opal diffuser

LIGHT SOURCE

LED

POWER SUPPLY

230V, 50Hz
Luminaires are equipped with electronic transformer
Other possible options are specified below product codes





Dimensions l/w/h (mm)
1330x183x24
1890x183x24




www.halla.eu/inlio



Dimensions l/w/h (mm)
1180x183x24



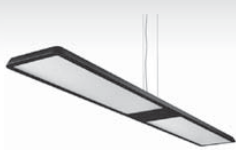

www.halla.eu/inlio

TECHNICAL SPECIFICATION LED LUMINAIRES

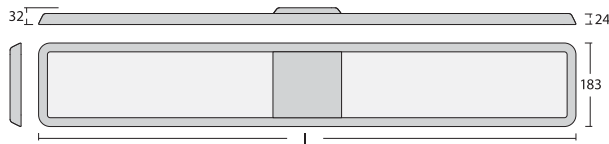
All luminaires are made in European Union (the Czech Republic).

INLIO

INLIO



DIMENSIONAL DRAWING



DESCRIPTION

INSTALLATION



MATERIAL
aluminium

DISTRIBUTION OF LIGHT



ENERGY CLASS
A++, A+, A

CERTIFICATION MARKS



LUMINAIRE CODE	POWER INPUT OF LED LUMINAIRE	LUMEN OUTPUT LUMINAIRE	COLOUR	DIMENSIONS l/w/h (mm)	CAT. PAGE
120-501*-40GGE/840 (830)	50,8W	5870lm (5690lm)	■ ■ ■	1330x183x24	52
120-501*-60GGE/840 (830)	76,2W	8800lm (8540lm)	■ ■ ■	1890x183x24	52

* = K luminaires with opal diffuser
* = I luminaires with microprismatic optic

supplied including suspensions 2000 mm, supply cable and ceiling cup
other options of electrical connections: D, T

INLIO



DIMENSIONAL DRAWING



DESCRIPTION

INSTALLATION



MATERIAL
aluminium

DISTRIBUTION OF LIGHT



ENERGY CLASS
A++, A+, A

CERTIFICATION MARKS



LUMINAIRE CODE	POWER INPUT OF LED LUMINAIRE	LUMEN OUTPUT LUMINAIRE	COLOUR	DIMENSIONS l/w/h (mm)	CAT. PAGE
120-511*-40GGE/840 (830)	51,6W	5870lm (5690lm)	■ ■ ■	1180x183x24	52

* = K luminaires with opal diffuser
* = I luminaires with microprismatic optic

supplied including suspensions 2000 mm and ceiling cup
powered via suspension wires – SELV voltage
other options of electrical connections: D, T

Tunable White luminaires

120-511*-40GGQ/TC	62W	5490lm	■ ■ ■	1180x183x24	52
-------------------	-----	--------	-------	-------------	----

* = K luminaires with opal diffuser
* = I luminaires with microprismatic optic

Luminaire is powered thru wire suspensions – SELV voltage
control system – DALI DT8