



# ROCKET

Wall mounted fixtures with symmetrical light distribution to achieve task, accent or general lighting.

Neutral cylindrical body available in 4 diameters: 60mm, 80mm, 90mm and 120mm.

Extensive range of reflectors to achieve the best photometric results.

Aluminium reflectors in various finishes: faceted metalized or sandblasted anodised depending on the beam angle outcome.

Powder painted aluminium profile available in various finishes, customized RAL under request.

Built-in driver, included.

Passive temperature management: heat dissipation flows through an aluminium heat sink and the fixture body itself.

Wall mounted by aluminium mounting plate with two fixing points. Cable entry through the aluminium wall mounting plate.

ROCKET can be combined with the KERI pendant line and the GOTA surface mounted fixtures to get a harmonious finish.

**Suggested applications:** apartments, shops, bars, restaurants, hotels and similar installations.



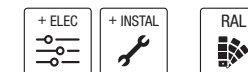
|                               |                               |                               |                               |                               |
|-------------------------------|-------------------------------|-------------------------------|-------------------------------|-------------------------------|
|                               |                               |                               |                               |                               |
| ø 60mm                        | ø 80mm                        | ø 80mm                        | ø 90mm                        | ø 90mm                        |
| ⌈ 300mm<br>⌈ 400mm<br>⌈ 500mm | ⌈ 300mm<br>⌈ 400mm<br>⌈ 500mm | ⌈ 300mm<br>⌈ 400mm<br>⌈ 500mm | ⌈ 300mm<br>⌈ 400mm<br>⌈ 500mm | ⌈ 300mm<br>⌈ 400mm<br>⌈ 500mm |
| 44°    69°                    | 38°                           | 56°                           | 32°/35°                       | 49°/53°                       |
|                               |                               |                               |                               |                               |
| 610lm - 1310lm                | 610lm - 1250lm                | 610lm - 1250lm                | 610lm - 1980lm                | 610lm - 1980lm                |
| 4.7W - 8W                     | 4.8W - 8W                     | 4.8W - 8W                     | 4.8W - 11W                    | 4.8W - 11W                    |

|                               |                               |                          |
|-------------------------------|-------------------------------|--------------------------|
|                               |                               |                          |
| ø 120mm                       | ø 120mm                       | ø 120mm                  |
| ⌈ 300mm<br>⌈ 400mm<br>⌈ 500mm | ⌈ 300mm<br>⌈ 400mm<br>⌈ 500mm | ⌈ 400mm<br>⌈ 500mm       |
| 71°                           | 86°                           | 12°    24°    40°    50° |
|                               |                               |                          |
| 610lm - 1250lm                | 610lm - 1250lm                | 1530lm - 2740lm          |
| 4.8W - 8W                     | 4.8W - 8W                     | 11W - 17W                |

## ELECTRONIC EQUIPMENT

Standard.  
DALI/DSI/switchDIM/corridorFUNCTION.

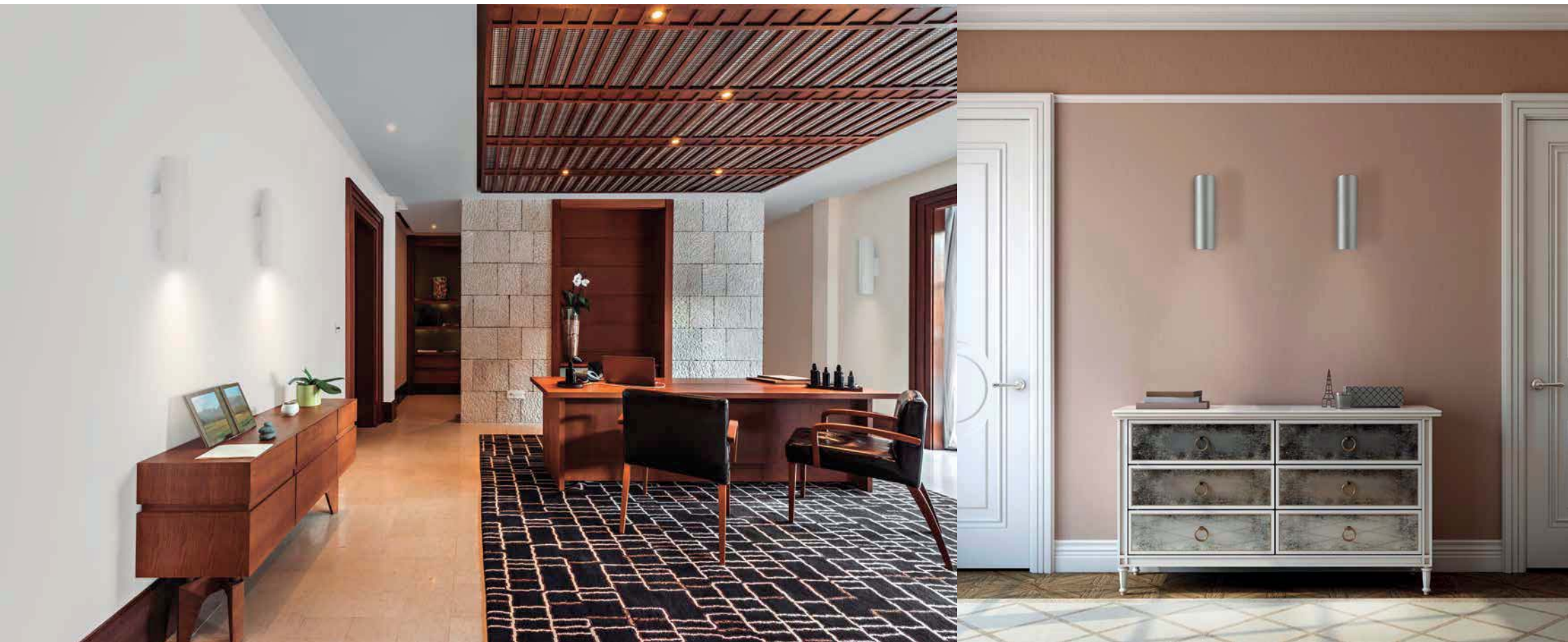
## ACCESSORIES AND FINISHES



more product details



rovasi.com



Suggested applications: residences