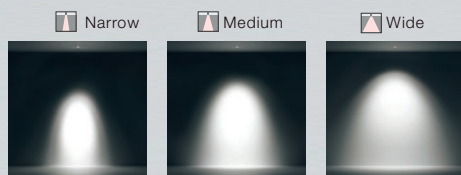


**NEKO / CLUB**  
LED Module

- NEKO LED-Module sind die perfekte Austauschlösung für MR16 Halogen.
- Sehr schickes und elegantes Design und vielfältig einsetzbar bei Downlight- und Spotanwendungen.
- Hohe Farbkonsistenz bei allen LED-Modulen innerhalb einer 3-Step-MacAdam-Ellipse
- Neko-LED-Module können in verschiedenen Leuchten verwendet werden, ohne Einfluss auf die Farbkonsistenz.
- Hervorragende Lichtausbeute und exzellenter Lampenlichtstromerhalt mit 50.000 Stunden Lebensdauer machen häufige Lampenwechsel zu einem Relikt der Vergangenheit.
- 5 Jahre Qualitätsgarantie von NEKO.



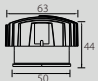
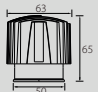
- The NEKO LED module is a perfect replacement for MR16 halogen modules.
- Smart and elegant design.
- Versatile for downlight and spotlight applications.
- Uniform color for all LED modules within 3 MacAdam steps.
- You can use NEKO LED modules in various fixture designs with no color variability.
- Outstanding lumen output, excellent lumen maintenance.
- 50,000-hour lifetime eliminates frequent re-lamping.
- NEKO 5-Year Quality Guarantee



Verschiedene Abstrahlwinkel für architektonische Designs  
Three beam angles for various architectural design requirements.



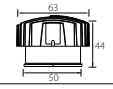
**NEKO / CLUB**  
LED Module

Model No.	M3	M4
Product Photo		
Dimension (mm)		
Cutout (mm)	Mounted with Trim	Mounted with Trim
Wattage	7.5W/ 11W	9W/ 13W/ 18W
CCT	2700K/ 3000K/ 4000K Dim to Warm	2700K/ 3000K/ 4000K Dim to Warm
CRI	>80/ >90	>80/ >90
Beam Angle	15°/ 25°/ 35°/ 60°	20°/ 35°/ 60°
Lumen Output	1050lm @CRI80 3000K	1300lm @CRI80 3000K
Reflector Color	NEKO Standard	NEKO Standard
IP	IP54	IP54
Dimming	On/ Off, Phase Dim, 0/1-10V Dim, DALI Dim	On/ Off, Phase Dim, 0/1-10V Dim, DALI Dim
Accessory	Fit with CLUB Series Trims	Fit with CLUB Series Trims

**NEKO / CLUB/ M3**  
LED Downlight Module  
Fit with CLUB Series Trims



12W CRI95 1800K-3000K Dim to Warm 35°/60° bridge.lux 50,000h@L80B10 Replace Halogen 50W UGR < 19 IP54 5 YEAR WARRANTY CB CE



LED Power	System Power	LED Voltage	LED Current	CRI	CCT	Beam	LED Output	System Output	Code
12 W	14 W	34 V	350 mA	95	1800K-3000K	35° 60°	1100lm 1100lm	Max.950lm Max.950lm	M3-9D33512N-NN M3-9D36012N-NN

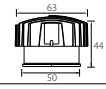
Code Remark: N=N(No Driver) P=P(Phase Dim) A=A(1-10V Dim) D=D(DALI Dim)



M3-DW



11W/7.5W CRI90 2700K/3000K/4000K 15°/35°/60° CITIZEN 50,000h@L80B10 UGR < 19 IP54 5 YEAR WARRANTY CB CE



LED Power	System Power	LED Voltage	LED Current	CRI	CCT	Beam	LED Output	System Output	Code
11 W	13 W	31 V	350 mA	90	2700K	15°	1000lm	900lm	M3-9271511N-NN
						25°	1000lm	900lm	M3-9272511N-NN
						35°	1000lm	900lm	M3-9273511N-NN
						60°	1000lm	900lm	M3-9276011N-NN
					3000K	15°	1100lm	950lm	M3-9301511N-NN
						25°	1100lm	950lm	M3-9302511N-NN
						35°	1100lm	950lm	M3-9303511N-NN
						60°	1100lm	950lm	M3-9306011N-NN
					4000K	15°	1200lm	1000lm	M3-9401511N-NN
						25°	1200lm	1000lm	M3-9402511N-NN
						35°	1200lm	1000lm	M3-9403511N-NN
						60°	1200lm	1000lm	M3-9406011N-NN
7.5W	9 W	31 V	250 mA	90	2700K	15°	850lm	650lm	M3-9271508N-NN
						25°	850lm	650lm	M3-9272508N-NN
						35°	850lm	650lm	M3-9273508N-NN
						60°	850lm	650lm	M3-9276008N-NN
					3000K	15°	900lm	700lm	M3-9301508N-NN
						25°	900lm	700lm	M3-9302508N-NN
						35°	900lm	700lm	M3-9303508N-NN
						60°	900lm	700lm	M3-9306008N-NN
					4000K	15°	950lm	750lm	M3-9401508N-NN
						25°	950lm	750lm	M3-9402508N-NN
						35°	950lm	750lm	M3-9403508N-NN
						60°	950lm	750lm	M3-9406008N-NN

Code Remark: N=N(No Driver) F=F(ON-OFF) P=P(Phase Dim) A=A(1-10V Dim) D=D(DALI Dim)



M3

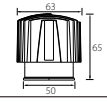


Can be used in limited ceiling space of 80mm height

**NEKO / CLUB/ M4**  
LED Downlight Module  
Fit with CLUB Series Trims



12W CRI95 1800K-3000K Dim to Warm 35°/60° bridgeLux 50,000h@L80B10 Replace Halogen 50W UGR < 19 IP54 5 YEAR GUARANTEE CB CE



LED Power	System Power	LED Voltage	LED Current	CRI	CCT	Beam	LED Output	System Output	Code
12 W	14 W	34 V	350 mA	95	1800K-3000K	35° 60°	1100lm 1100lm	Max.950lm Max.950lm	M4-9D33512N-NN M4-9D36012N-NN



M4-DW

Code Remark: N=N(No Driver) P=P(Phase Dim) A=A(1-10V Dim) D=D(DALI Dim)



13W 9W 18W Available In Different LED Chip CRI90 2700K 3000K 4000K 20° 35° 60° CITIZEN 50,000h@L80B10 UGR < 19 IP54 5 YEAR GUARANTEE CB CE ENEC



LED Power	System Power	LED Voltage	LED Current	CRI	CCT	Beam	LED Output	System Output	Code						
13 W	15 W	36 V	350 mA	90	2700K	20°	1300lm	1100lm	M4-9272013N-NN						
						35°	1300lm	1100lm	M4-9273513N-NN						
						60°	1300lm	1100lm	M4-9276013N-NN						
						3000K	20°	1400lm	1200lm	M4-9302013N-NN					
							35°	1400lm	1200lm	M4-9303513N-NN					
							60°	1400lm	1200lm	M4-9306013N-NN					
						4000K	20°	1500lm	1300lm	M4-9402013N-NN					
							35°	1500lm	1300lm	M4-9403513N-NN					
							60°	1500lm	1300lm	M4-9406013N-NN					
						9 W	11 W	36 V	250 mA	90	2700K	20°	900lm	800lm	M4-9272009N-NN
												35°	900lm	800lm	M4-9273509N-NN
												60°	900lm	800lm	M4-9276009N-NN
3000K	20°	1000lm	850lm	M4-9302009N-NN											
	35°	1000lm	850lm	M4-9303509N-NN											
	60°	1000lm	850lm	M4-9306009N-NN											
4000K	20°	1100lm	950lm	M4-9402009N-NN											
	35°	1100lm	950lm	M4-9403509N-NN											
	60°	1100lm	950lm	M4-9406009N-NN											
18 W	21 W	36 V	500 mA	90	2700K							20°	1800lm	1500lm	M4-9272018N-NN
												35°	1800lm	1500lm	M4-9273518N-NN
												60°	1800lm	1500lm	M4-9276018N-NN
						3000K	20°	1900lm	1600lm	M4-9302018N-NN					
							35°	1900lm	1600lm	M4-9303518N-NN					
							60°	1900lm	1600lm	M4-9306018N-NN					
						4000K	20°	2000lm	1700lm	M4-9402018N-NN					
							35°	2000lm	1700lm	M4-9403518N-NN					
							60°	2000lm	1700lm	M4-9406018N-NN					



M4



M4-18W

Code Remark: N=N(No Driver) F=F(ON-OFF) P=P(Phase Dim) A=A(1-10V Dim) D=D(DALI Dim)



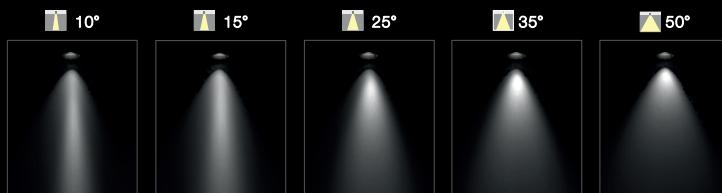
Can be used in limited ceiling space of 80mm height



- NEKO M4 Pro-LED-Module sind die perfekte Austauschlösung für MR16 Halogen.
- Sehr schickes und elegantes Design und vielfältig einsetzbar bei Downlight- und Spotanwendungen.
- Hohe Farbkonsistenz bei allen LED-Modulen innerhalb einer 2-Step-MacAdam-Ellipse
- NEKO M4 Pro-LED-Module können in verschiedenen Leuchten verwendet werden, ohne Einfluss auf die Farbkonsistenz.
- Hervorragende Lichtausbeute und exzellenter Lampenlichtstromerhalt mit 50.000 Stunden Lebensdauer machen häufige Lampenwechsel zu einem Relikt der Vergangenheit.
- 5 Jahre Qualitätsgarantie von NEKO.

- The NEKO M4 Pro LED module is a perfect replacement for MR16 halogen modules.
- Smart and elegant design.
- Versatile for downlight and spotlight applications.
- Uniform color for all LED modules within 2 MacAdam steps.
- You can use NEKO M4 Pro LED modules in various fixture designs with no color variability.
- Outstanding lumen output, excellent lumen maintenance.
- 50,000-hour lifetime eliminates frequent re-lamping.
- NEKO 5-Year Quality Guarantee

Architectural 10°



Verschiedene Abstrahlwinkel für architektonische Designs  
Five beam angles for various architectural design requirements.



**NEKO / CLUB/ M4 Pro**  
 Architectural LED Downlight Module  
 Fit with CLUB Series Trims



**M4 Pro LED Module**  
 LED Power: 7W/ 9W/ 12W/ 13W/ 18W  
 LED Chip: Bridgelux CRI>97, R9=95, 2-step SDCM  
 Beam Angle: 10°/ 15°/ 25°/ 35°/ 50°  
 Standard CCT: 2700K/ 3000K/ 3500K/ 4000K  
 Optional CCT: 1800K-3000K Warm Dim/ 2700K-6500K Tunable White  
 Optional Accessory: Honeycomb/ Diffusion Filter/ Linear Spread Filter  
 Single Asymmetric Filter/ Double Asymmetric Filter

M4 Pro LED Module



Accessory:

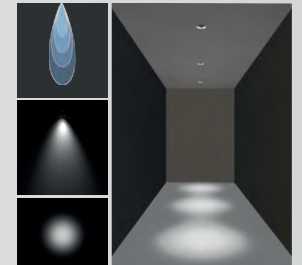


Honeycomb      Diffusion Filter      Linear Spread Filter      Single Asymmetric Filter      Double Asymmetric Filter

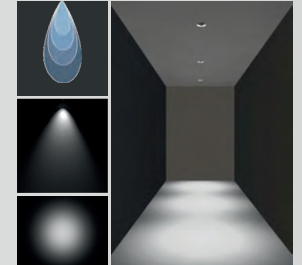
CLUB Trim:



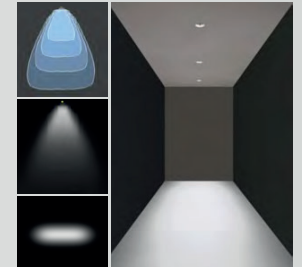
Honeycomb Effect



Diffusion Filter Effect



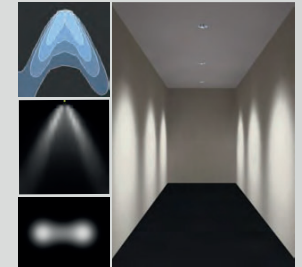
Linear Spread Filter Effect



Single Asymmetric Filter Effect

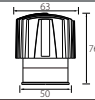


Double Asymmetric Filter Effect



**NEKO / CLUB/ M4 Pro**  
Architectural LED Downlight Module  
Fit with CLUB Series Trims

**NEW**



**13W** **18W** **CRI97** **2700K** **3000K** **3500K** **4000K** **15°** **25°** **35°** **50°** **bridgeLux** **50,000h@L80B10** **UGR < 19** **IP54** **5 YEAR GUARANTEE** **CB CE**

LED Power	System Power	LED Voltage	LED Current	CRI	CCT	Beam	LED Output	System Output	Code
13 W	15 W	36 V	350 mA	97	2700K	15°	1300lm	1050lm	M4P3-0271513N-NN
						25°	1300lm	1050lm	M4P3-0272513N-NN
						35°	1300lm	1050lm	M4P3-0273513N-NN
						50°	1300lm	1000lm	M4P3-0275013N-NN
				3000K	15°	1400lm	1100lm	1100lm	M4P3-0301513N-NN
					25°	1400lm	1100lm	1100lm	M4P3-0302513N-NN
					35°	1400lm	1100lm	1100lm	M4P3-0303513N-NN
					50°	1400lm	1050lm	1050lm	M4P3-0305013N-NN
				3500K	15°	1450lm	1150lm	1150lm	M4P3-0351513N-NN
					25°	1450lm	1150lm	1150lm	M4P3-0352513N-NN
					35°	1450lm	1150lm	1150lm	M4P3-0353513N-NN
					50°	1450lm	1100lm	1100lm	M4P3-0355013N-NN
				4000K	15°	1500lm	1200lm	1200lm	M4P3-0401513N-NN
					25°	1500lm	1200lm	1200lm	M4P3-0402513N-NN
					35°	1500lm	1200lm	1200lm	M4P3-0403513N-NN
					50°	1500lm	1150lm	1150lm	M4P3-0405013N-NN
-----									
18 W	21 W	36 V	500 mA	97	2700K	18°	1900lm	1500lm	M4P4-0271818N-NN
						30°	1900lm	1500lm	M4P4-0273018N-NN
						36°	1900lm	1500lm	M4P4-0273618N-NN
						50°	1900lm	1400lm	M4P4-0275018N-NN
				3000K	18°	2000lm	1600lm	1600lm	M4P4-0301818N-NN
					30°	2000lm	1600lm	1600lm	M4P4-0303018N-NN
					36°	2000lm	1600lm	1600lm	M4P4-0303618N-NN
					50°	2000lm	1500lm	1500lm	M4P4-0305018N-NN
				3500K	18°	2100lm	1650lm	1650lm	M4P4-0351818N-NN
					30°	2100lm	1650lm	1650lm	M4P4-0353018N-NN
					36°	2100lm	1650lm	1650lm	M4P4-0353618N-NN
					50°	2100lm	1600lm	1600lm	M4P4-0355018N-NN
				4000K	18°	2200lm	1700lm	1700lm	M4P4-0401818N-NN
					30°	2200lm	1700lm	1700lm	M4P4-0403018N-NN
					36°	2200lm	1700lm	1700lm	M4P4-0403618N-NN
					50°	2200lm	1650lm	1650lm	M4P4-0405018N-NN

Code Remark: N=N(No Driver) F=F(ON-OFF) P=P(Phase Dim) A=A(1-10V Dim) D=D(DALI Dim)



M4 Pro-13W



M4 Pro-18W

**7W** **CRI97** **2700K** **3000K** **3500K** **4000K** **10°** **bridgeLux** **50,000h@L80B10** **UGR < 19** **IP54** **5 YEAR GUARANTEE** **CB CE**



M4 Pro-7W-10°

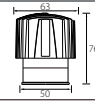
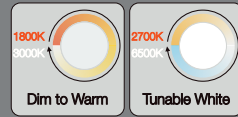
LED Power	System Power	LED Voltage	LED Current	CRI	CCT	Beam	LED Output	System Output	Code	
7 W	9 W	36 V	200 mA	97	2700K	10°	650lm	500lm	M4P1-0271007N-NN	
						3000K	10°	700lm	550lm	M4P1-0301007N-NN
						3500K	10°	725lm	600lm	M4P1-0351007N-NN
						4000K	10°	750lm	650lm	M4P1-0401007N-NN

Code Remark: N=N(No Driver) F=F(ON-OFF) P=P(Phase Dim) A=A(1-10V Dim) D=D(DALI Dim)



**NEKO / CLUB/ M4 Pro**  
Architectural LED Downlight Module  
Fit with CLUB Series Trims

**NEW**



12W CRI95 1800K-3000K Dim to Warm 38° 50° bridgeLux 50,000h@L80B10 UGR < 19 IP54 5 YEAR WARRANTY CB CE



M4 Pro-DW

LED Power	System Power	LED Voltage	LED Current	CRI	CCT	Beam	LED Output	System Output	Code
12 W	14 W	34 V	350 mA	95	1800K-3000K	38°	1100lm	Max.900lm	M4P5-0D33812N-NN
						50°	1100lm	Max.850lm	M4P5-0D35012N-NN

Code Remark: N=N(No Driver) P=P(Phase Dim) A=A(1-10V Dim) D=D(DALI Dim)



9W 13W CRI90 2700K-6500K Tunable White 20° 38° 50° bridgeLux 50,000h@L80B10 UGR < 19 IP54 5 YEAR WARRANTY CB CE



M4 Pro-TW

LED Power	System Power	LED Voltage	LED Current	CRI	CCT	Beam	System Output	Code
9 W	11 W	36 V	250 mA	90	2700K-6500K	20°	700lm-850lm	M4P6-9TW2009N-NN
						38°	700lm-850lm	M4P6-9TW3809N-NN
						50°	620lm-750lm	M4P6-9TW5009N-NN
					@2700K	38°	700lm	
					@3000K	38°	730lm	
					@4000K	38°	800lm	
					@5000K	38°	850lm	
					@6500K	38°	850lm	
13 W	15 W	36 V	350 mA	90	2700K-6500K	20°	900lm-1100lm	M4P6-9TW2013N-NN
						38°	900lm-1100lm	M4P6-9TW3813N-NN
						50°	850lm-1050lm	M4P6-9TW5013N-NN
					@2700K	38°	900lm	
					@3000K	38°	950lm	
					@4000K	38°	1000lm	
					@5000K	38°	1100lm	
					@6500K	38°	1100lm	

Code Remark: N=N(No Driver) D=D(DALI Dim)

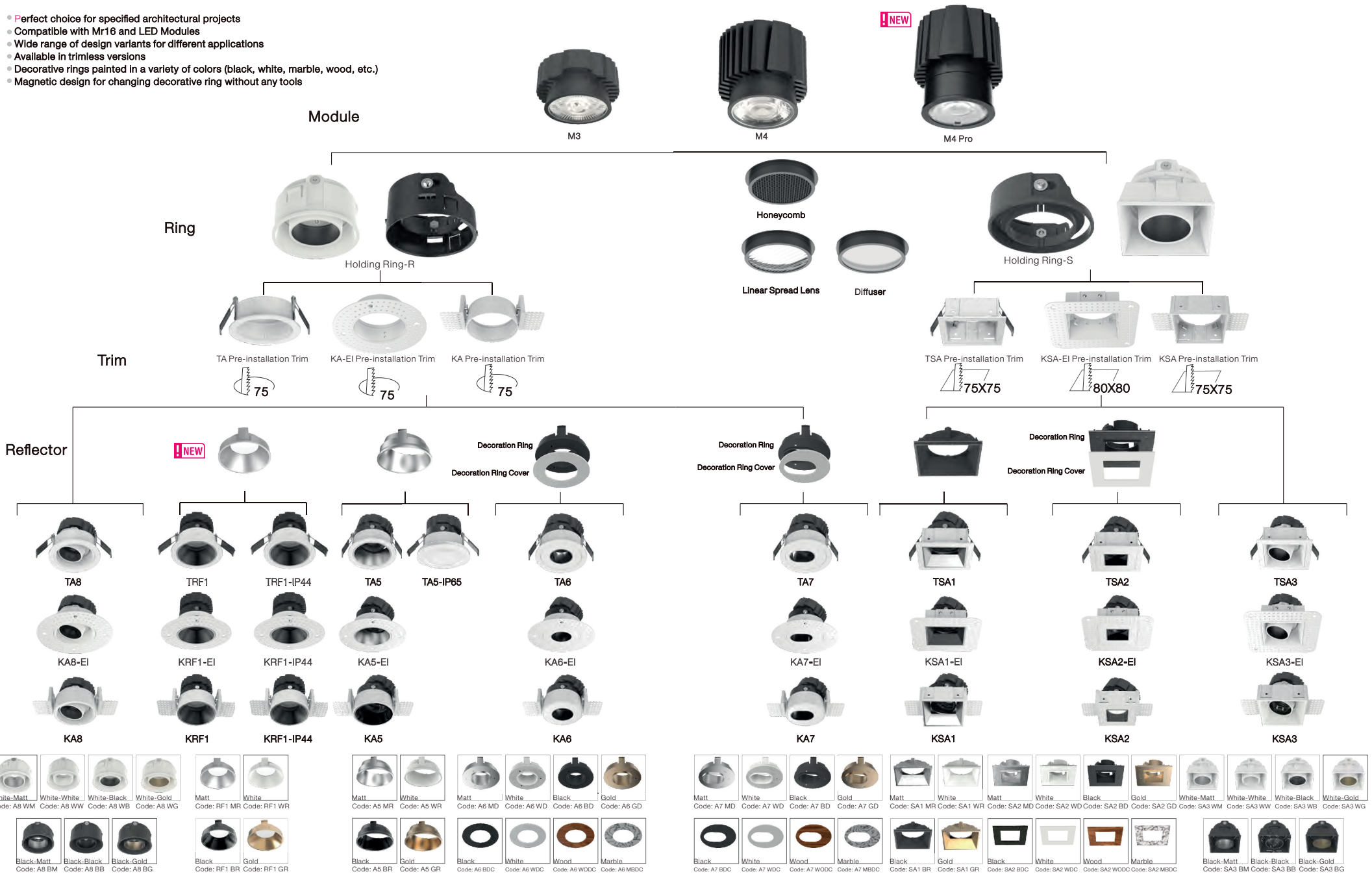


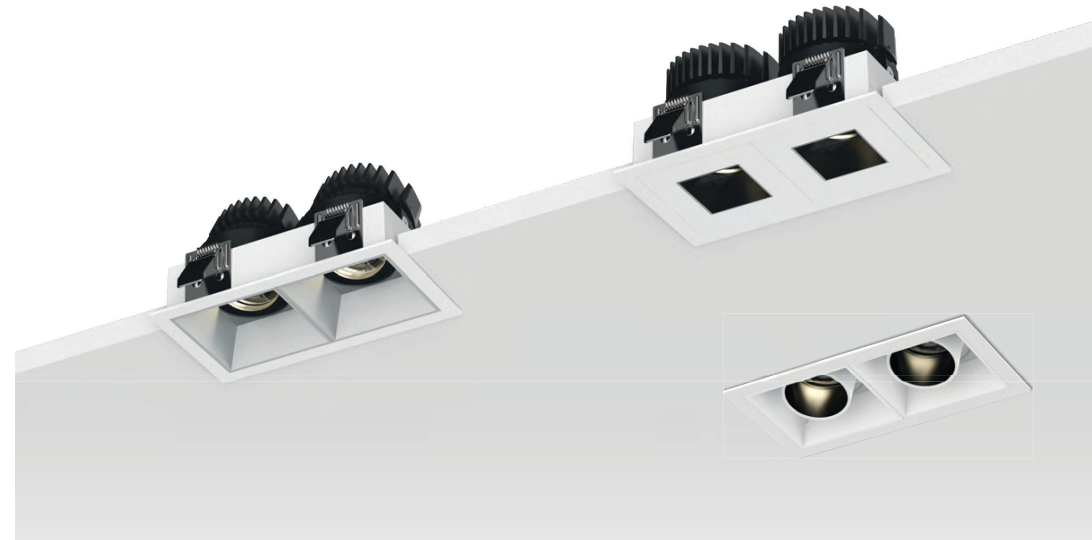
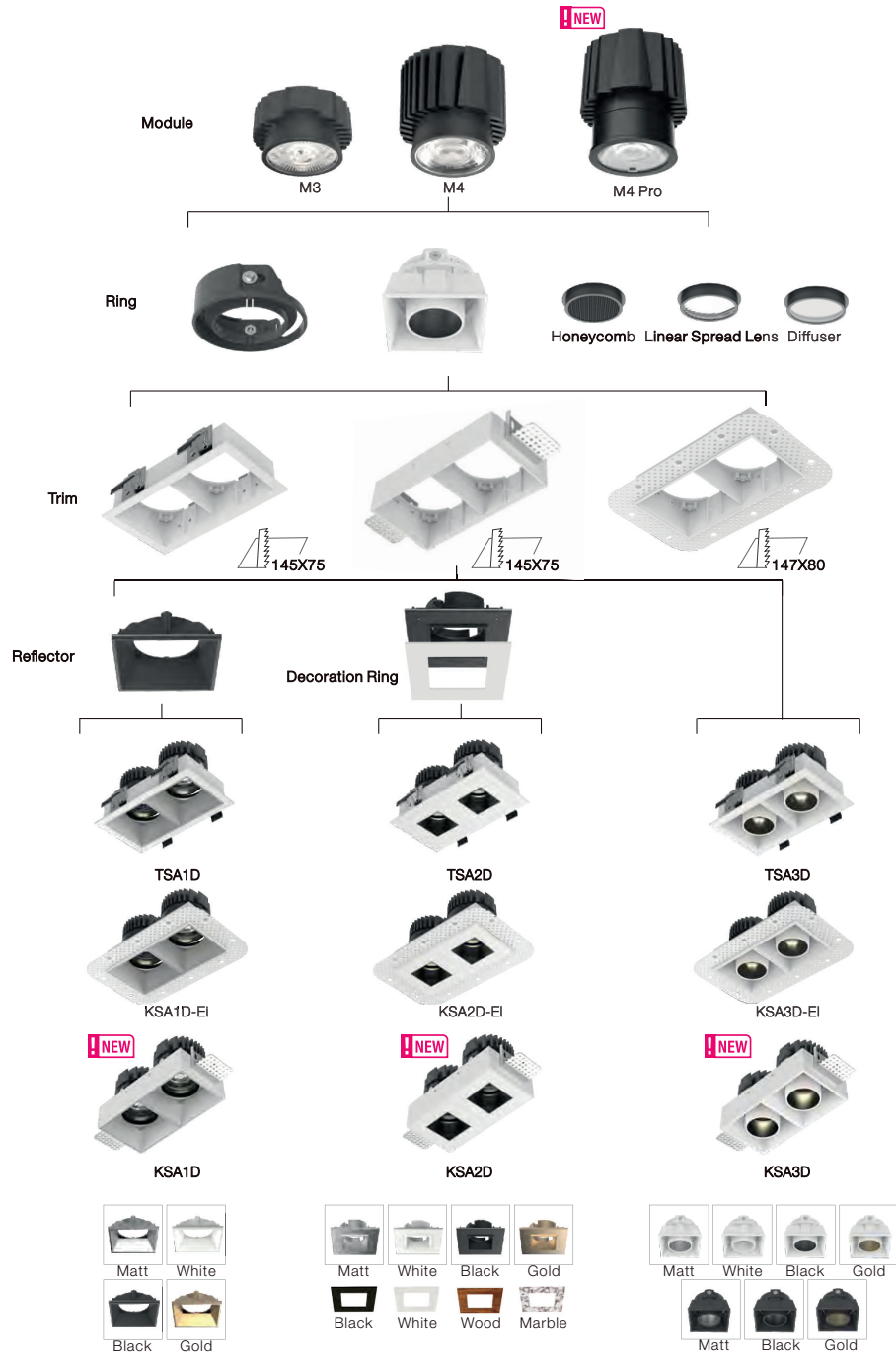




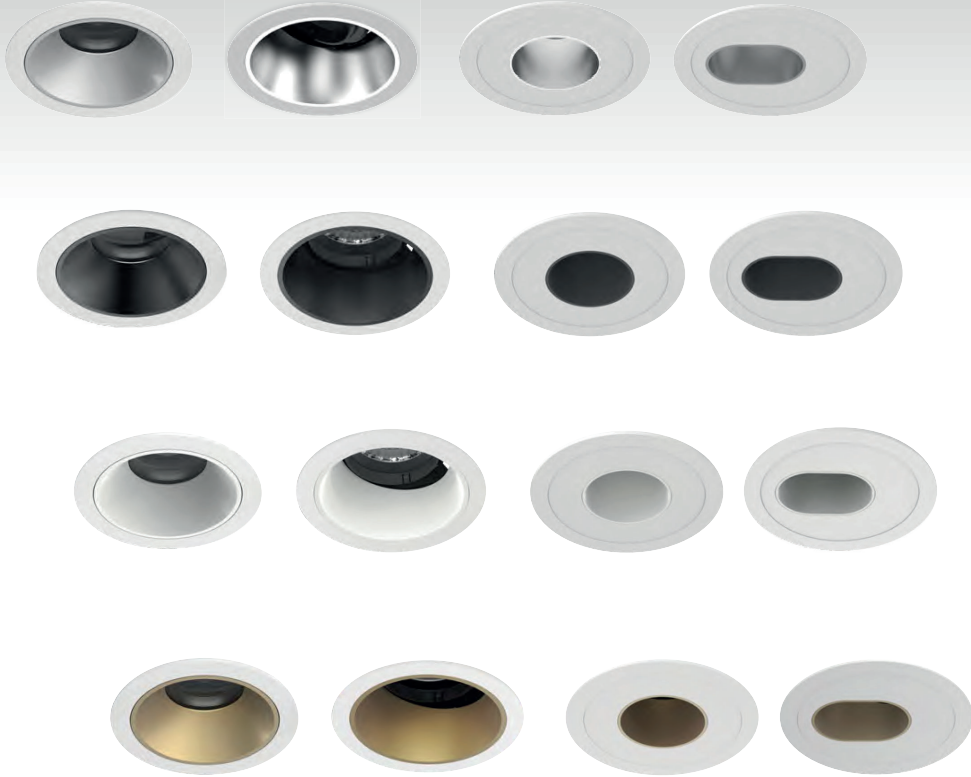
**NEKO / CLUB**  
Trim Series

- Perfect choice for specified architectural projects
- Compatible with Mr16 and LED Modules
- Wide range of design variants for different applications
- Available in trimless versions
- Decorative rings painted in a variety of colors (black, white, marble, wood, etc.)
- Magnetic design for changing decorative ring without any tools





NEW

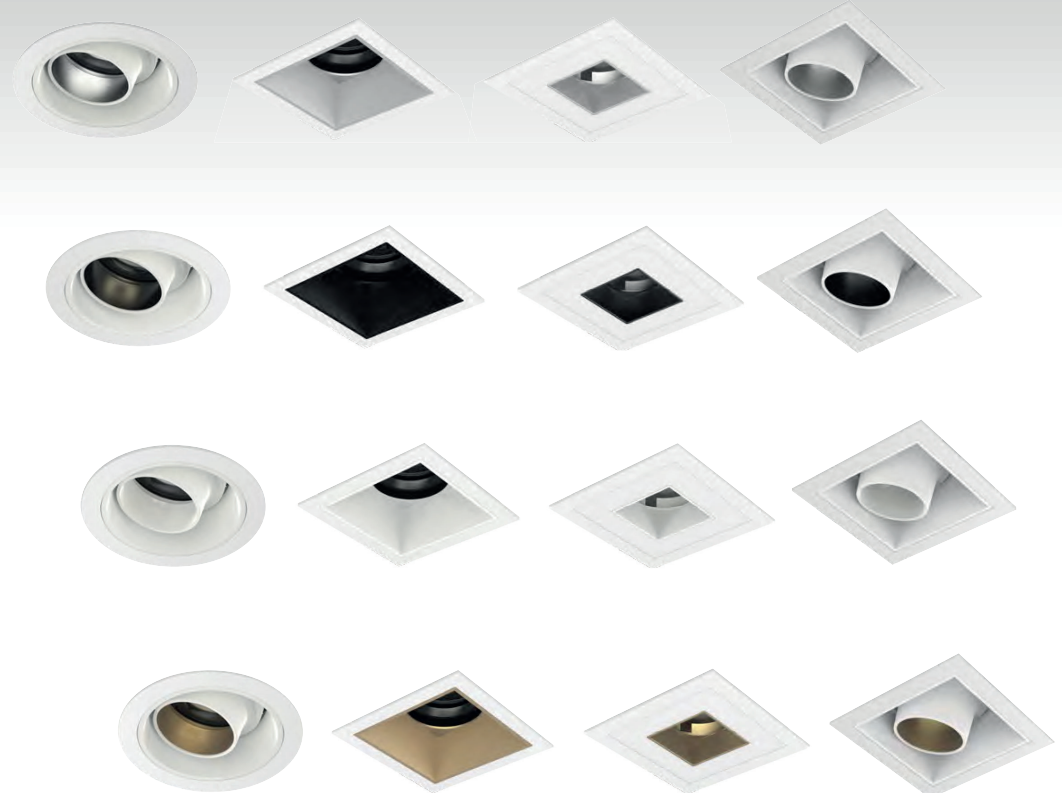


TRF1

TA5

TA6

TA7

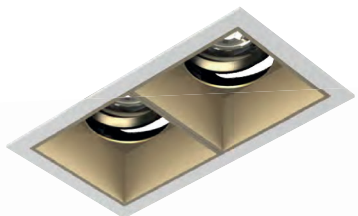
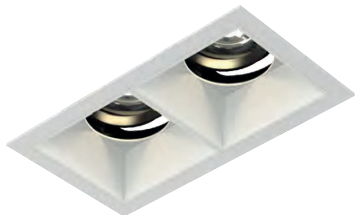
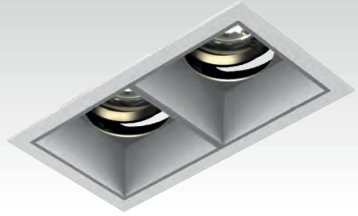


TA8

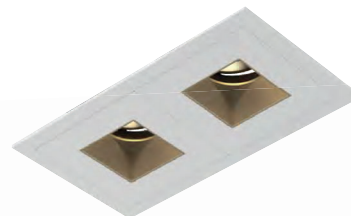
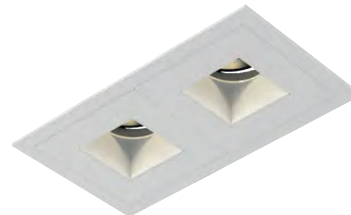
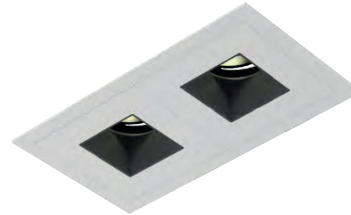
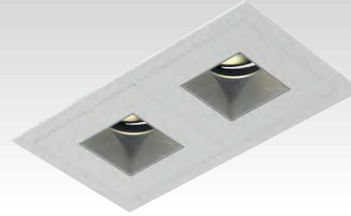
TSA1

TSA2

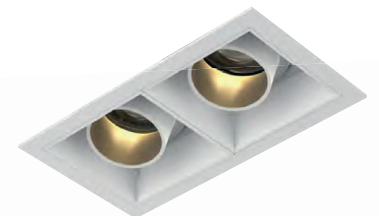
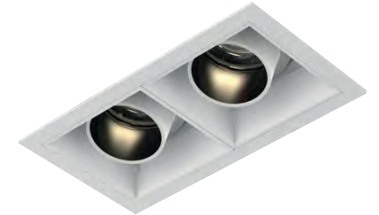
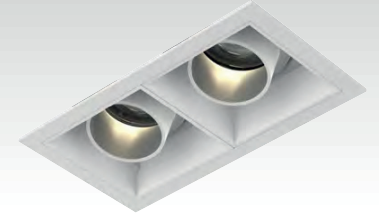
TSA3



TSA1D



TSA2D

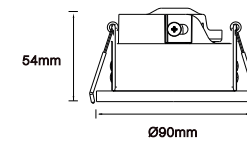


TSA3D

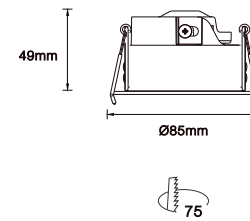
**NEKO / CLUB**  
Trim Series  
Surface IP65



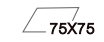
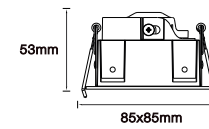
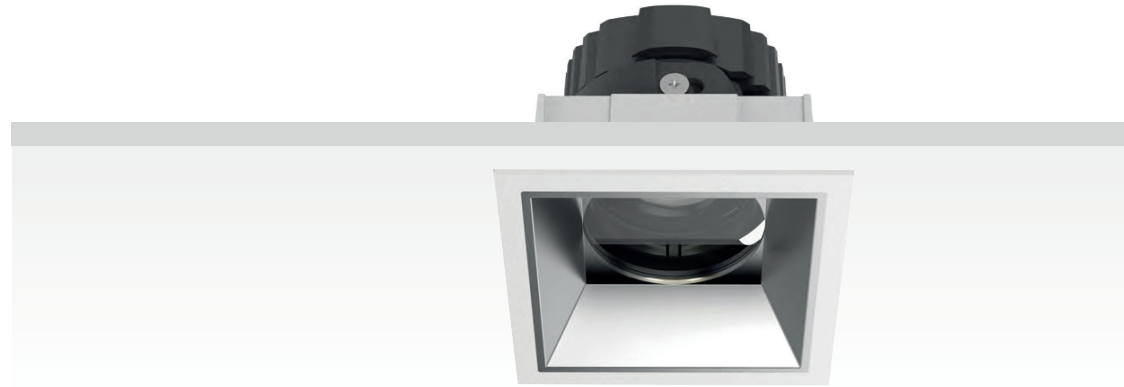
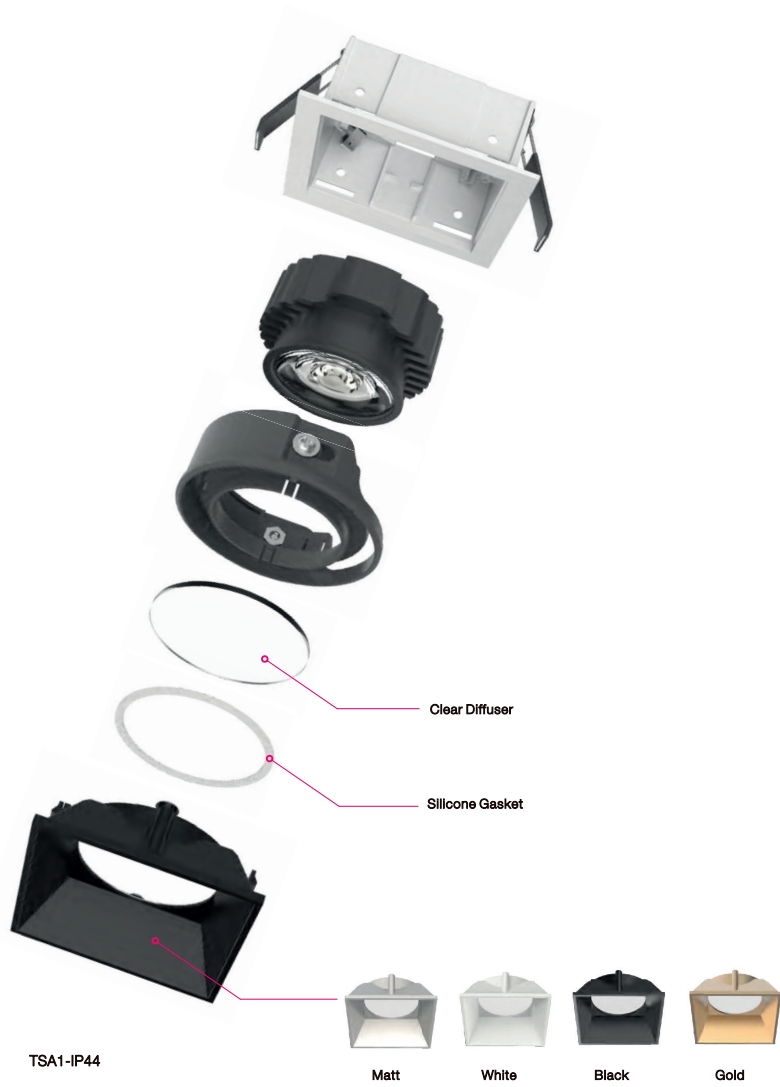
TA5-IP65



**NEKO / CLUB**  
Trim Series  
Surface IP44



**NEKO / CLUB**  
Trim Series  
Surface IP44







NEW



KA5



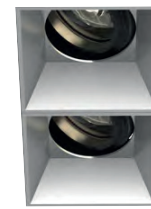
KA8



KRF1



KSA1



KSA1D-EI



KSA3



KSA2



KSA2D-EI



KSA3D-EI

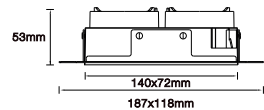
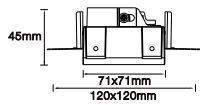
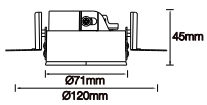


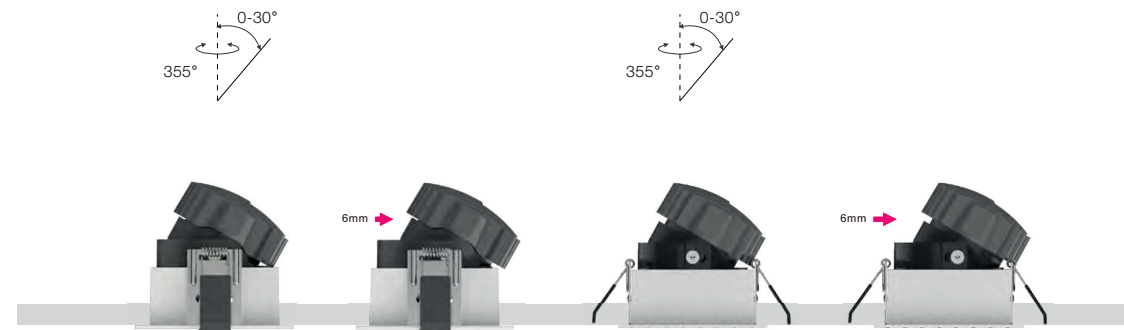
KA6



KA7

Installation Trimless Trims

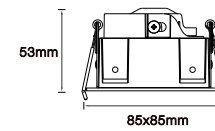




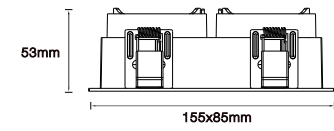
TSA1



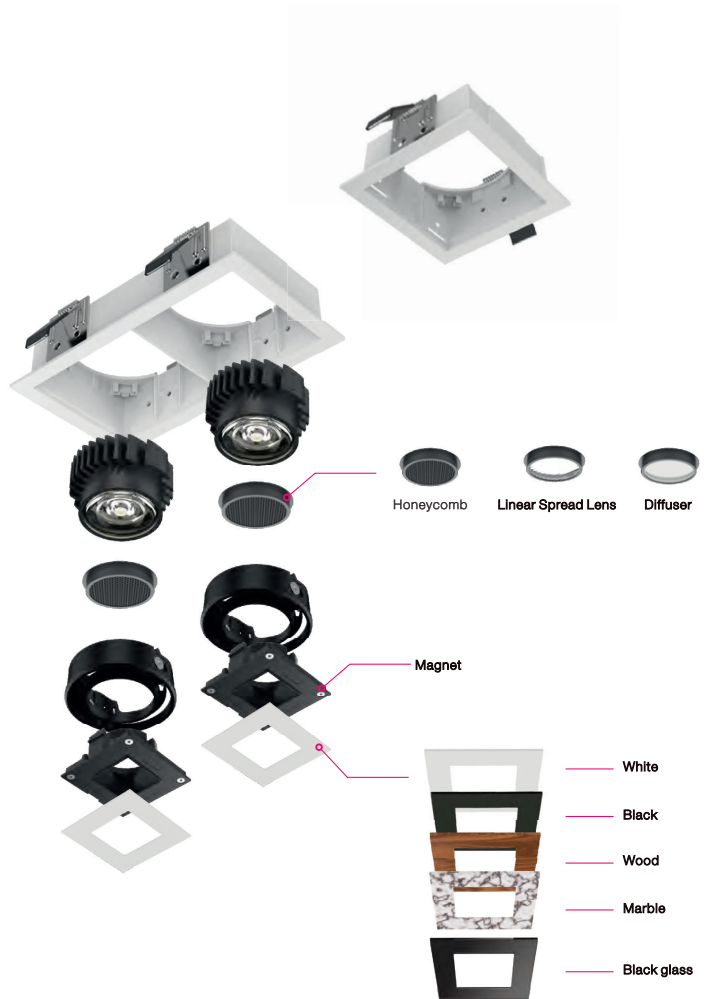
TSA1D



75X75



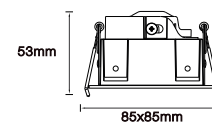
145X75



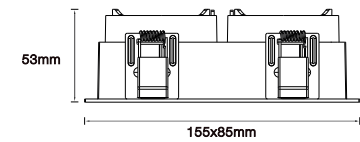
TSA2



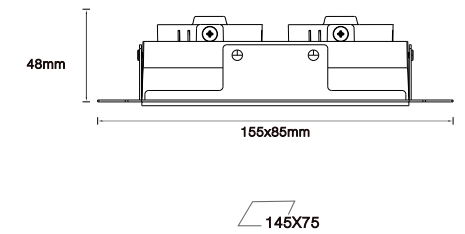
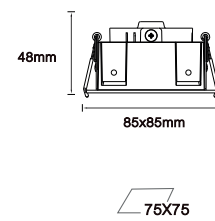
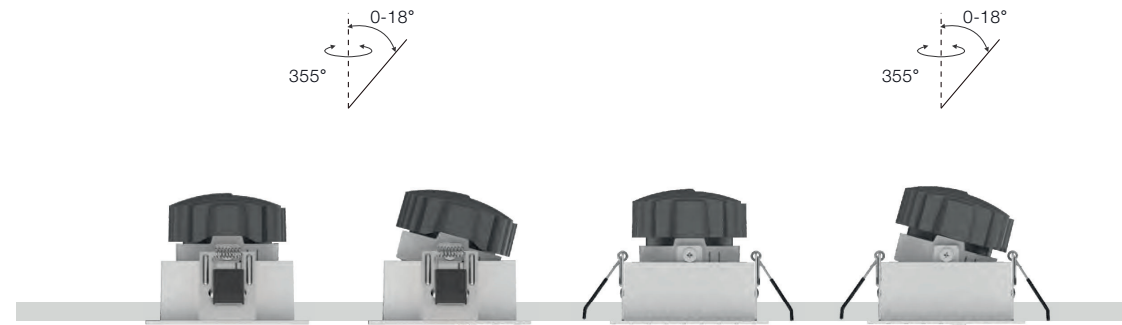
TSA2D



75X75

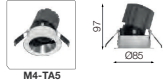
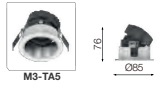


145X75

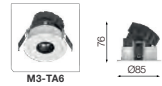


**NEKO / CLUB**  
Trim Series

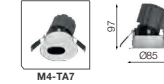
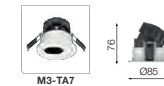
**TA5**



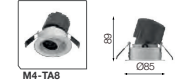
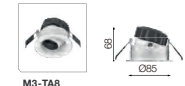
**TA6**



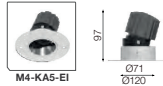
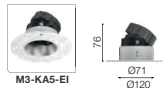
**TA7**



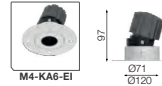
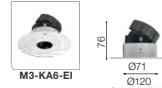
**TA8**



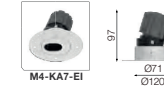
**KA5-EI**



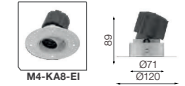
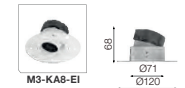
**KA6-EI**



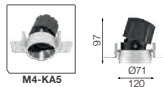
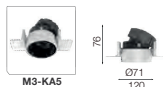
**KA7-EI**



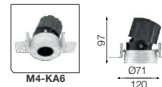
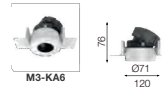
**KA8-EI**



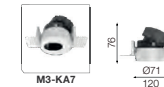
**KA5**



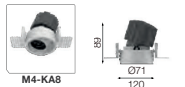
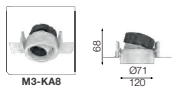
**KA6**



**KA7**

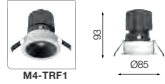


**KA8**



**NEKO / CLUB**  
Trim Series

TRF1/ TRF1-IP44 **NEW**



**TSA1**



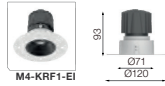
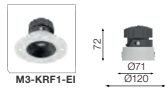
**TSA2**



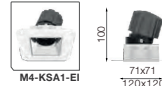
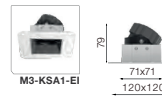
**TSA3**



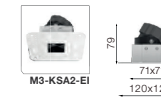
KRF1-EI/ KRF1-EI-IP44 **NEW**



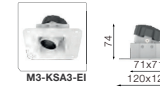
**KSA1-EI**



**KSA2-EI**



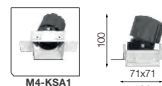
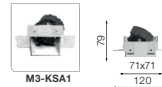
**KSA3-EI**



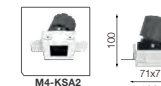
KRF1/ KRF1-IP44 **NEW**



**KSA1**



**KSA2**

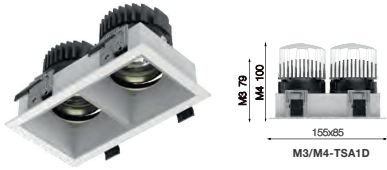


**KSA3**

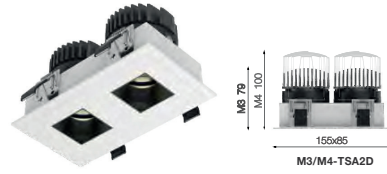


**NEKO / CLUB**  
Trim Series

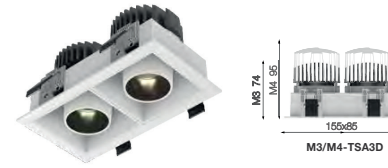
**TSA1D**



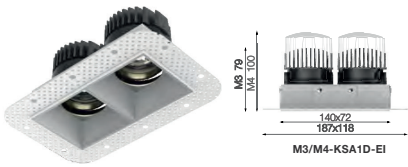
**TSA2D**



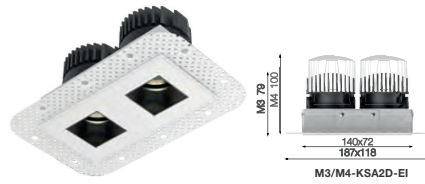
**TSA3D**



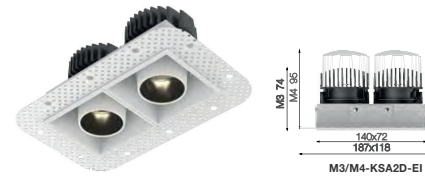
**KSA1D-EI**



**KSA2D-EI**

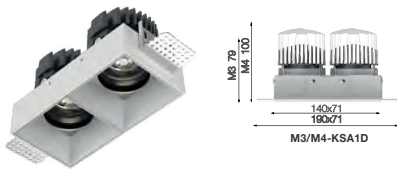


**KSA2D-EI**



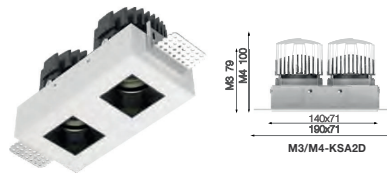
**KSA1D**

**NEW**



**KSA2D**

**NEW**



**KSA3D**

**NEW**

