

PEFC Certification

The PEFC logo is confirmation of certification.

PEFC product labels tell the consumer that forest based raw material in those products originated in sustainably managed forests.

Chain of Custody (CoC) can track diverse wood supply chains. Over 90 percent of Finland's commercial forests are certified.

PEFC organisation granted PEFC certificate for Tehomet Valmont on August 2009.





Carbon footprint

A wooden pole's carbon dioxide emissions during its life cycle are significantly lower than those of a corresponding steel pole.

According to the study realized by REJLERS in Tehomet Valmont factories, with a wooden pole's carbon dioxide emissions being only around 40 % of a steel pole's. Particles production are also much lower.

This study has been done using KCL ECO 4.0. software.

CO₂ footprint study includes:

- Production of the pole
- Shipment to the installation location
- Life span ratio. 30 years for wooden poles, 45 years for steel poles.
- Maintenance



WOOD

STEEL

WOODEN POLES MATERIAL

Light on.





ZEP – Zero Emission Poles

We calculate the CO₂ that is created during the production of your column...



Zero Emission Pole
by valmont

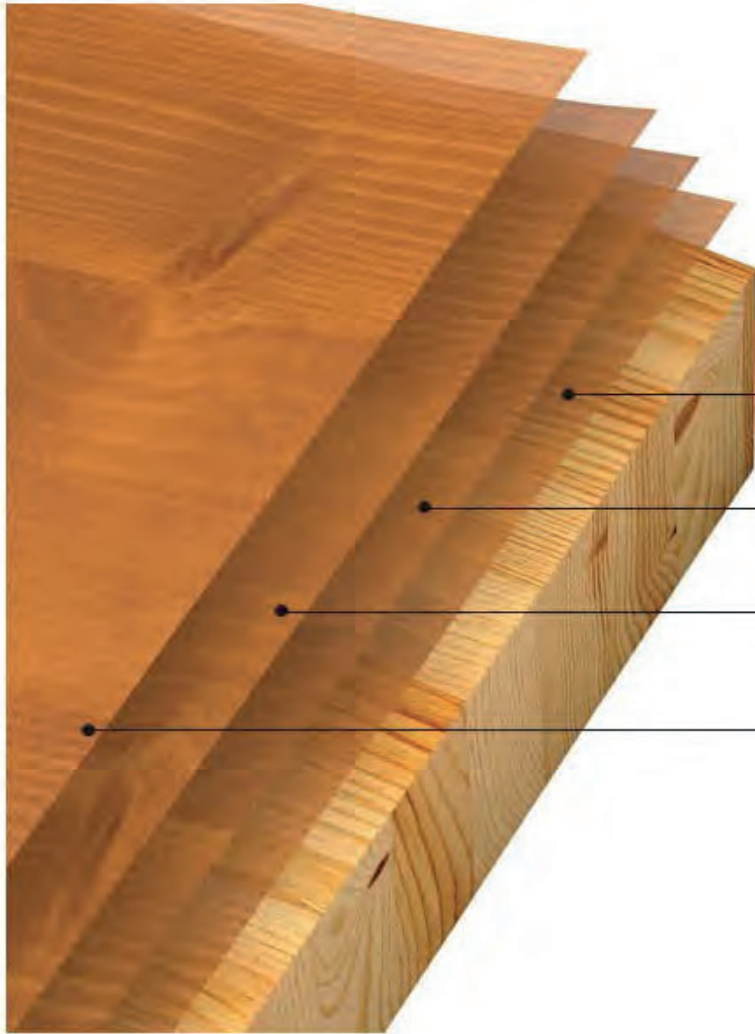
Jatropha trees are planted with the help of Trees for Travel...

In an effort to further offset the environmental impact of our products, Valmont now works alongside the Trees for All organisation. Together, we have set up a parallel process aimed at compensating the residual CO₂ associated with the production of Valmont's columns.

To date, approximately 25,000 jatropha trees have been planted offsetting the equivalent of 1,245 tonnes of CO₂.

Valmont is taking part in a program for planting Jatropha shrubs in Mali. The growth of these shrubs will absorb the equivalent CO₂ emitted during the production of your poles. The activity thus generated will be used to create a local social and economic balance.





Preservative

Colour

Pigmented
varnish

Pigmented
varnish

Surface treatment Layers

The first layer is a preservative which protects the wood from blue stain fungi, mildew and rot. VOC* 9 g/l.

The second layer is then applied to give the wood its final colour. VOC* 23g/l.

To receive optimized thickness of varnish, 2 layers of colour tinted varnish are applied to protect against UV. Varnish has excellent weather-resistance because it has been pigmented and thus protecting layers under it. VOC* 30 g/l per layer.

For coastal and high UV-radiation areas extra layer of varnish is optional.